

MANUAL IMPOSITION - GANGING

- 1) Open up your PDF document

In this Example, I have opened up a 80 page (6" x 11") PDF document and I would like to create a Dutch Cut Layout (Gang) to save ink and paper on a 12.5" x 18" sheet.

*Note: I'm Using NEW Features in Quite Imposing Plus 4 to do this Job. Earlier versions could do Manual Imposition however, the New version has an **Undo** Button to help if you make a mistake and all Manual Sequences (XMLs) can now be saved And Exported to **Quite Hot Imposing 4.0** if needed.*

*Also Note: Manual Imposition now has a NEW Feature that let's you **Continue layer to more sheets** – Now, you don't have to create sheet after sheet placing each file, you can just do the first sheet and select this New Feature to complete your layout no mater how many pages in your PDF document.*

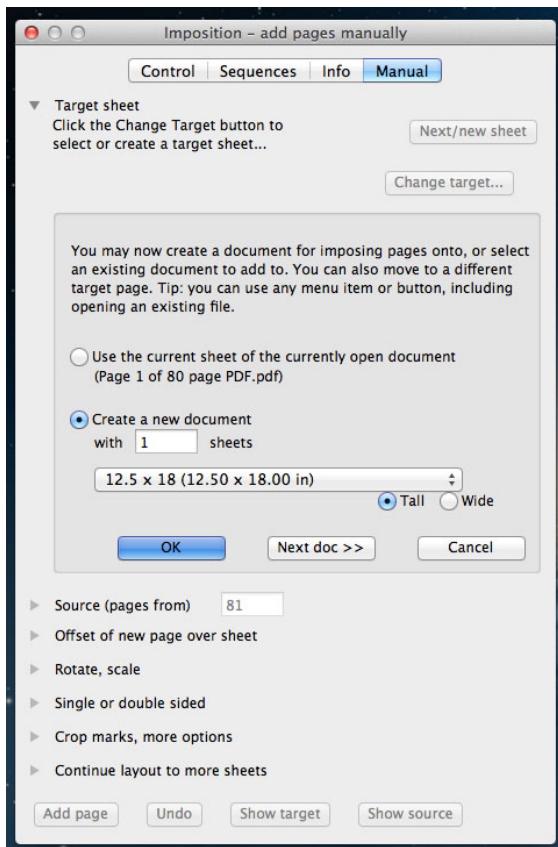
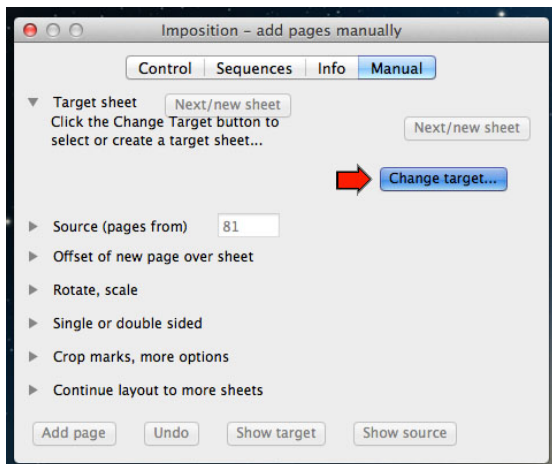
- 2) To access Quite Imposing Plus, simply Select >**Plug-ins** and then >**Quite Imposing Plus** from Acrobat's **Menu bar**. Alternately, selecting >**Plug-ins** from the **Menu bar** and then >**Quite Imposing Plus** >**Imposition Control Panel**.

- 3) Click or Select **Manual...** button
A dialog box will appear.

In this Example, you need to pick a **Target Sheet** first (this lets you set what size sheet your going to output on)

- 4) Click **Change target...** button to continue
A dialog box will appear.

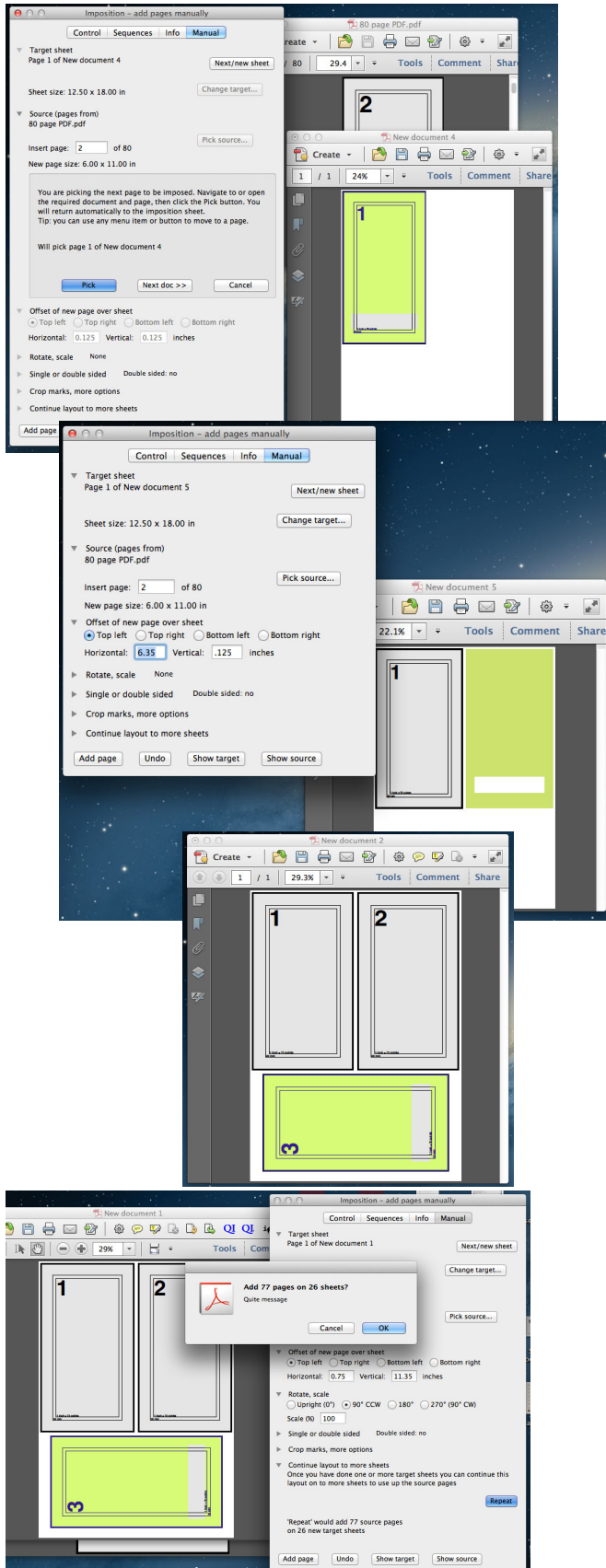
In this Example, I have selected to Create a New document with **1** sheet at 12.5" x 18" (I used More choices... to create sheet size).



QUITE SOFTWARE

TECHNICAL SUPPORT
Innovative PDF Solutions

MANUAL IMPOSITION - GANGING... Continued



- 5) Click or Select **OK** button
Note: You now have your Target sheet.
- 6) Next you need Open up the PDF document you want to place (if it's not already opened). If it's NOT OPENED, YOU **CAN'T** SELECT IT.
- 7) Click the **Pick Source...** button. A Dialog box appears. Now you can Pick the PDF that you're going to place on to your output sheets.

Note: Once you place a PDF page you can then go to the next one in that PDF file. You should also have notice once you do this a highlighted Color should appear on your output sheet. Place it where you'd like using controls.

*In my Example
Offset • Top left Horizontal .125
Vertical .125*

- 8) Click **Add page** button
- 9) Now, Insert Page 2 come up in PDF.
Note: You can place the next page or select another page 'within that PDF' it's up to you. I placed (Inserted) page 2:
 - Top left Horizontal: 6.35 and Vertical: .125Click **Add page** button
- 10) Then page 3 for this sheet placed the same way, except the placement of page is:
 - Rotate 90 CCW
 - Top Left Horizontal .75 Vertical: 11.375Click **Add page** button
- 11) Now you can select **Continue layout to more sheets**. *Note: It Creates, Adds and Fills needed sheets for layout. Save your New Ganged PDF document and setup.*

If you have questions we will be happy to assist you at help@quite.com.

— Quite Software Technical Support Team
www.quite.com

